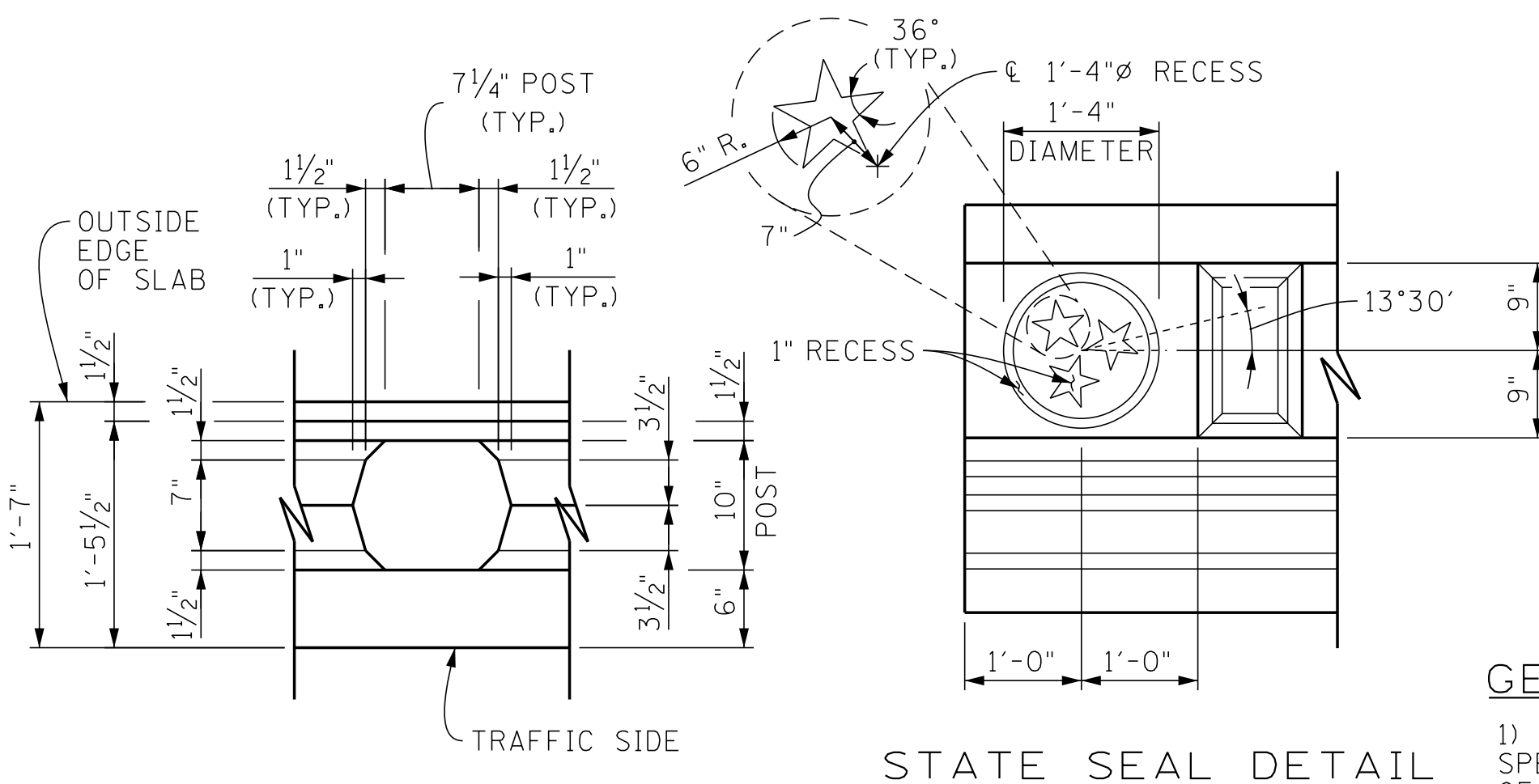


☆ DENOTES: WINGWALL LENGTH MINUS 4'-2" (VARIABLE) 10" MINIMUM.

◆ DENOTES: INCREASE 3" FOR STRUCTURES WITH AN OVERLAY.

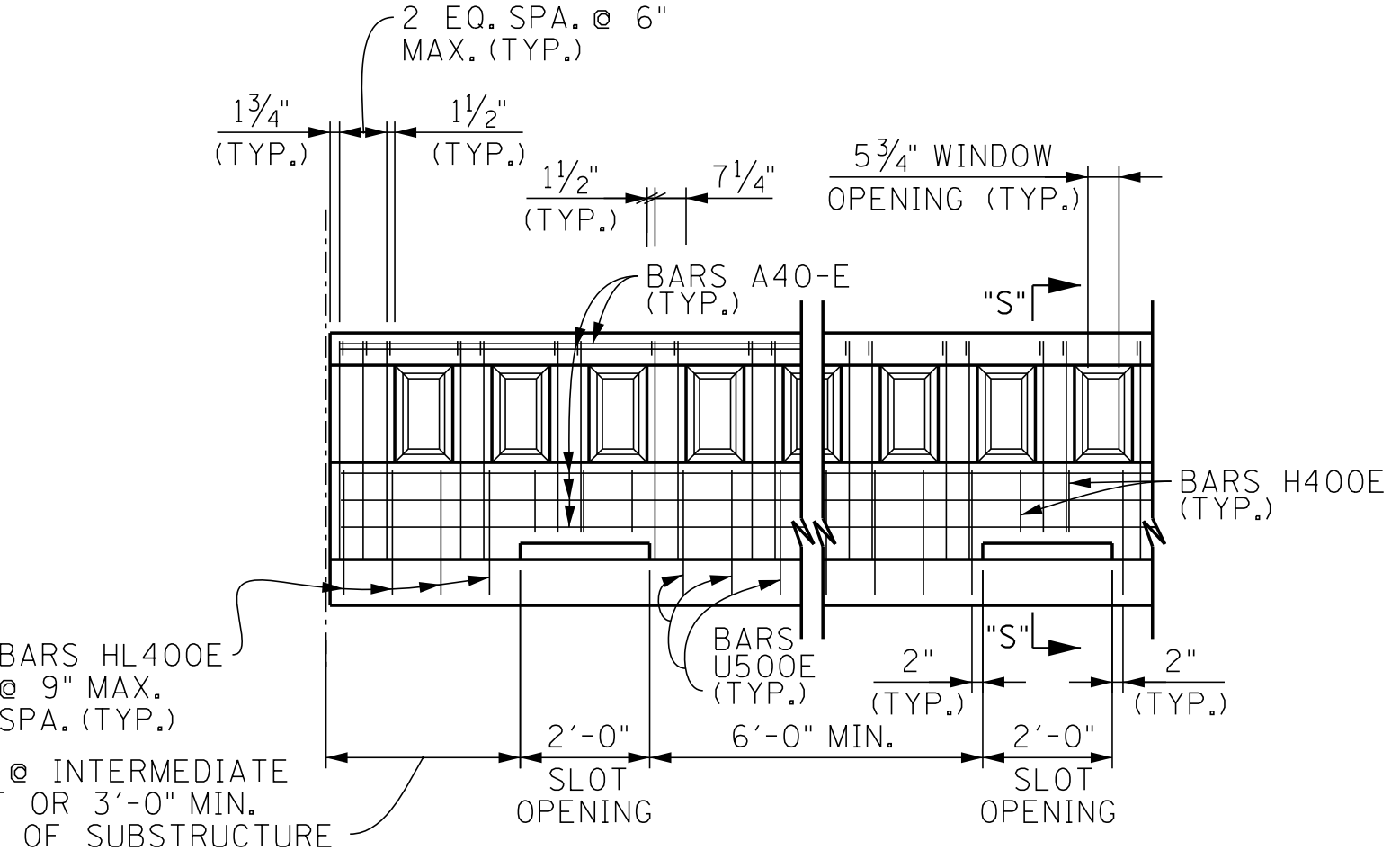
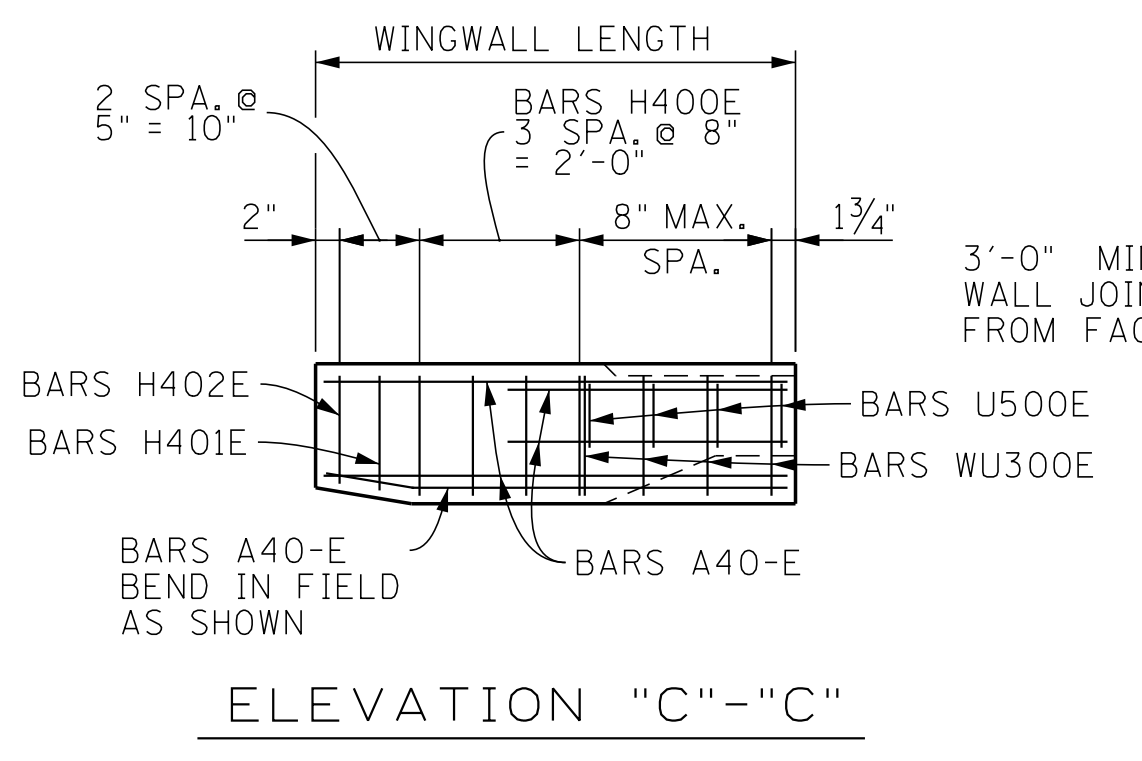
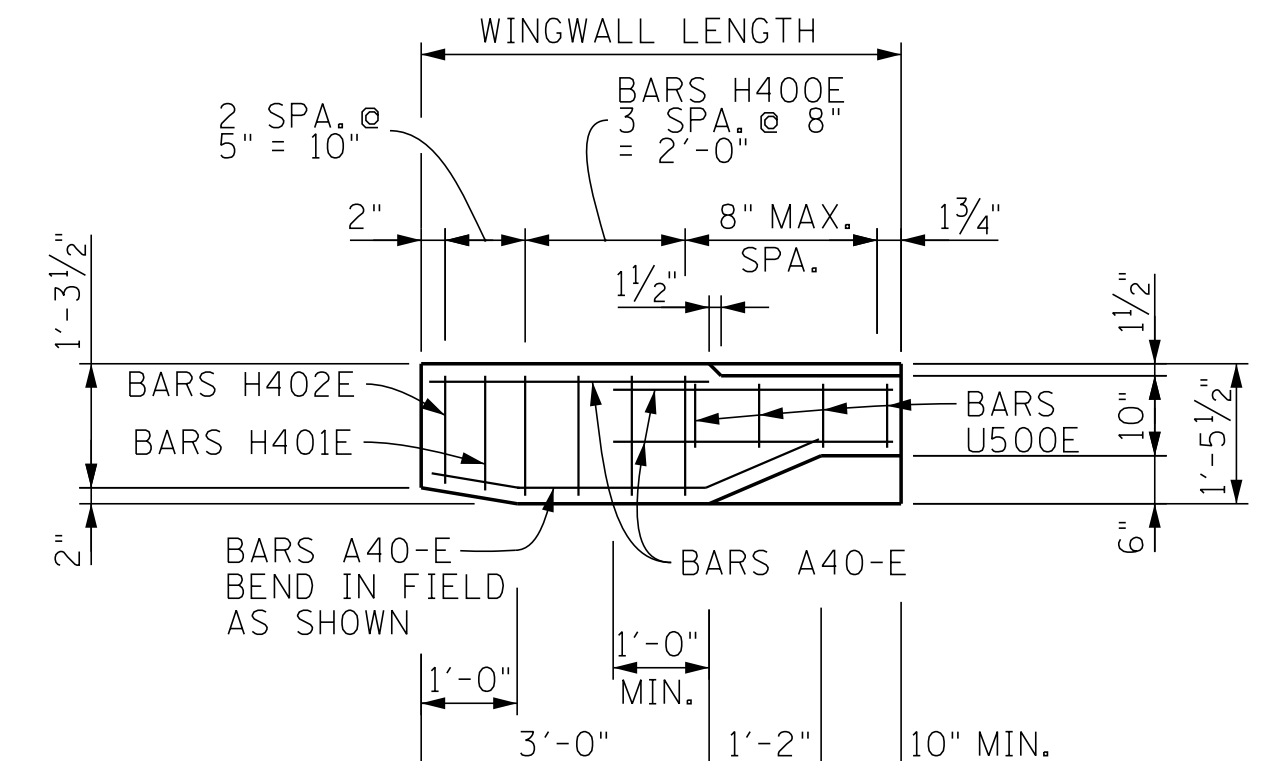
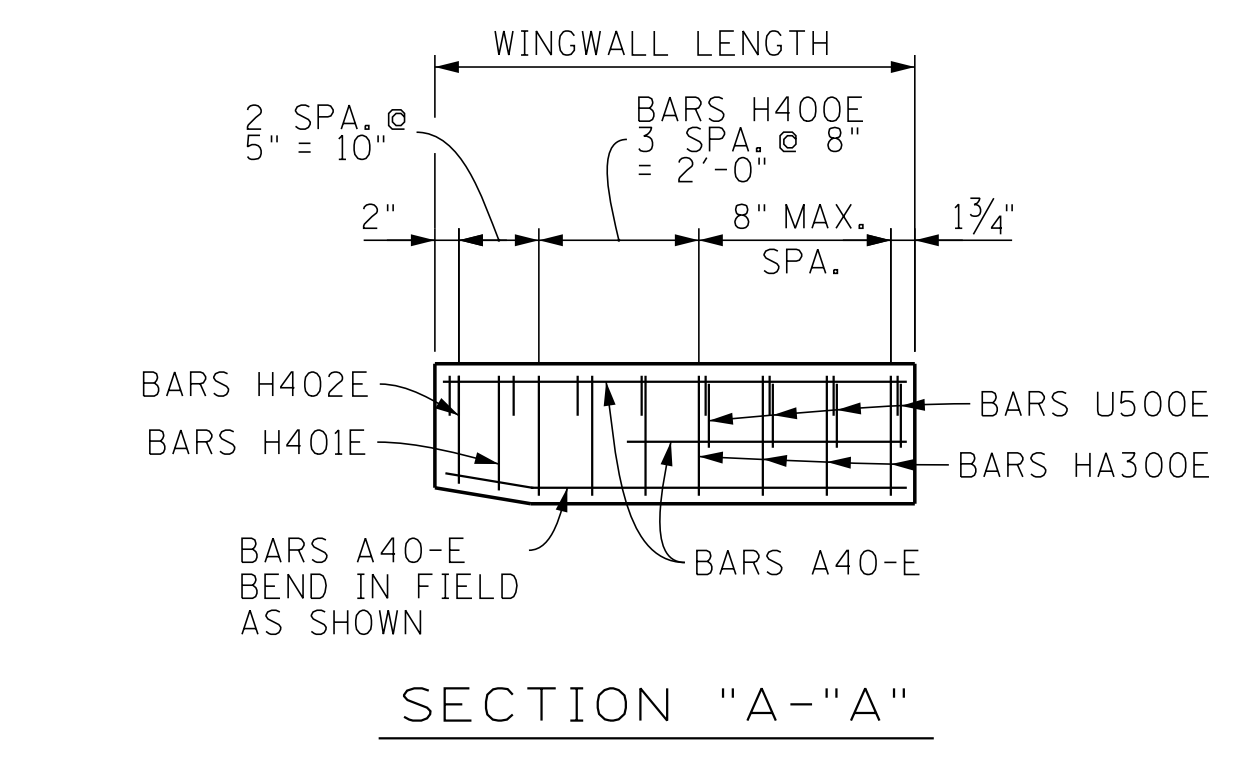
RAIL ELEVATION
(SIDEWALK NOT SHOWN)



STATE SEAL DETAIL
(SEAL TO BE ON BOTH FACES OF RAIL)

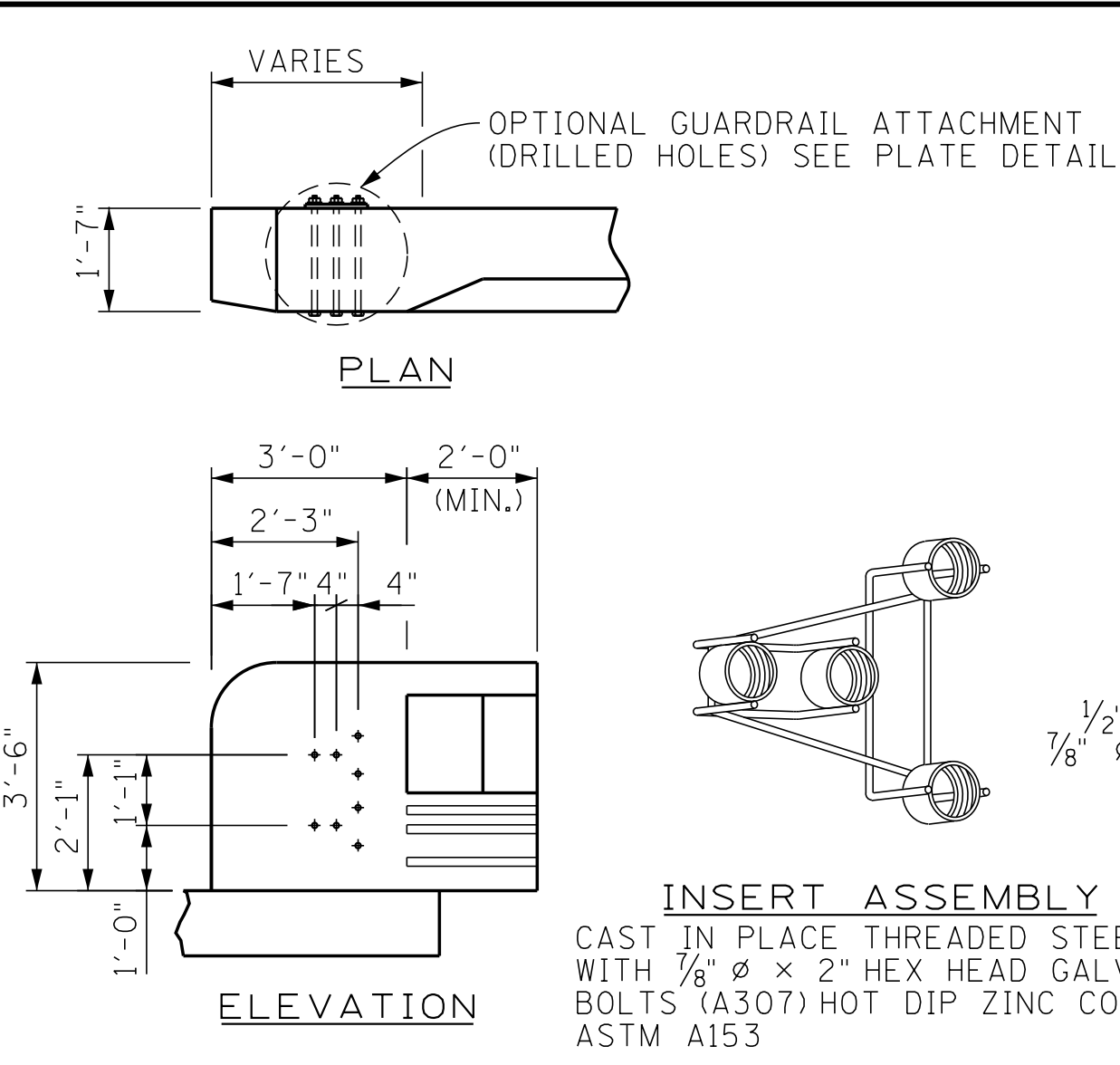
- GENERAL NOTES:**
- SPECIFICATIONS: STANDARD ROAD AND BRIDGE SPECIFICATIONS OF THE TENNESSEE DEPARTMENT OF TRANSPORTATION CURRENT EDITION.
 - DESIGN SPECIFICATIONS: AASHTO CURRENT EDITION WITH ADDENDA.
 - CONCRETE: TO BE CLASS "A", f'c = 3,000 psi. SEE SPECIAL PROVISION REGARDING SECTION 604 - CONCRETE STRUCTURES.
 - REINFORCING STEEL: TO BE ASTM A615 GRADE 60. STANDARD CRSI HOOK DETAILS APPLY UNLESS OTHERWISE NOTED ON THE BILL OF STEEL. SPACING DIMENSIONS ARE CENTER TO CENTER UNLESS OTHERWISE NOTED ON DETAIL DRAWINGS. ALL STEEL TO BE EPOXY COATED. COST TO BE INCLUDED IN UNIT PRICE BID FOR RAIL.
 - SPAN PILASTERS MAY BE SPACED AT FIFTH POINTS IN LONG SPANS. SEE BRIDGE LAYOUT.
 - THE RAILING SHALL BE FORMED AND CAST PLUMB, NOT PERPENDICULAR TO THE SLAB. THE DIMENSIONS AT THE TRAFFIC FACE SHALL BE KEPT CONSTANT, WITH VARIATION DUE TO CROSS SLOPE ACCOMMODATED AT THE REAR FACE.
 - PAYMENT FOR CONCRETE RAIL SHALL BE BASED ON LINEAR FEET FROM END OF ENDOPOST TO END OF ENDOPOST.
 - RAILING SHALL NOT BE CONSTRUCTED ON ANY STRUCTURE UNTIL THE ENTIRE BRIDGE DECK HAS BEEN POURED AND ALL FALSEWORK HAS BEEN STRUCK.
 - BASIS OF PAYMENT: ALL MISCELLANEOUS ITEMS, LABOR, MATERIALS, TOOLS AND INCIDENTALS FOR CONSTRUCTING THE ENTIRE CONCRETE RAIL SHALL BE INCLUDED IN THE PRICE BID FOR ITEM 620-05.02.
 - PRIOR TO CONSTRUCTING THE RAIL SYSTEM, SHOP DRAWINGS CONTAINING THE ENTIRE RAIL IN ELEVATION VIEW AND BILL OF STEEL SHALL BE SUBMITTED TO THE ENGINEER FOR APPROVAL.
 - OPEN JOINTS OR CONSTRUCTION JOINTS WILL BE REQUIRED AS SHOWN ON THIS SHEET OR AS MODIFIED ON CONTRACT DRAWINGS.
 - A 3/4"x4" FLAT DUMBBELL OR FLAT RIBBED P.V.C. (POLYVINYL CHLORIDE) WATERSTOP. WATERSTOP MUST BE CONTINUOUS ENTIRE LENGTH OF PARAPET. RUBBER WATERSTOP MUST BE FACTORY OR FIELD VULCANIZED OR CEMENT SPLICED WITH THE AID OF REMOLDED JUNCTIONS, AND/OR UNIONS. SEE "ON BRIDGE SLAB AT POST" DETAIL ON STD. DWG. NO. STD-14-4A FOR WATERSTOP LOCATION.

PROJECT NO.	YEAR	SHEET NO.	
	2017		
REVISIONS			
NO.	DATE	BY	BRIEF DESCRIPTION



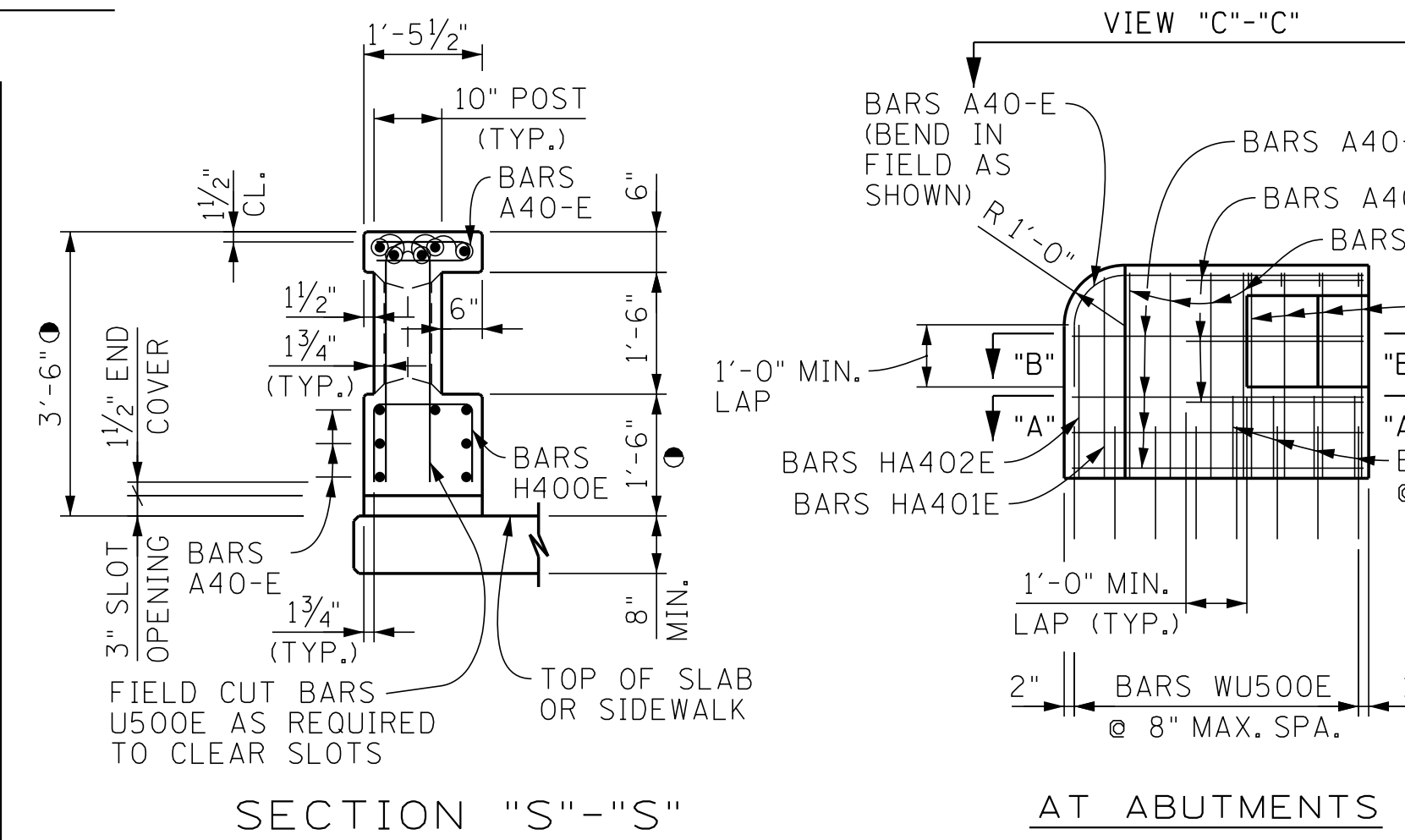
OPTIONAL SIDE SLOT DRAIN DETAIL

NOTE: SIDE SLOT DRAINS MAY BE USED WHERE SHOWN ELSEWHERE ON THE PLANS OR AS DIRECTED BY THE ENGINEER. DO NOT PLACE DRAINS OVER RAILROAD TRACKS, LOWER ROADWAYS, OR SIDEWALKS. WHEN THIS RAIL IS USED AS A SEPARATOR BETWEEN A ROADWAY SURFACE AND A SIDEWALK SURFACE, SIDE DRAIN SLOTS ARE NOT PERMITTED.

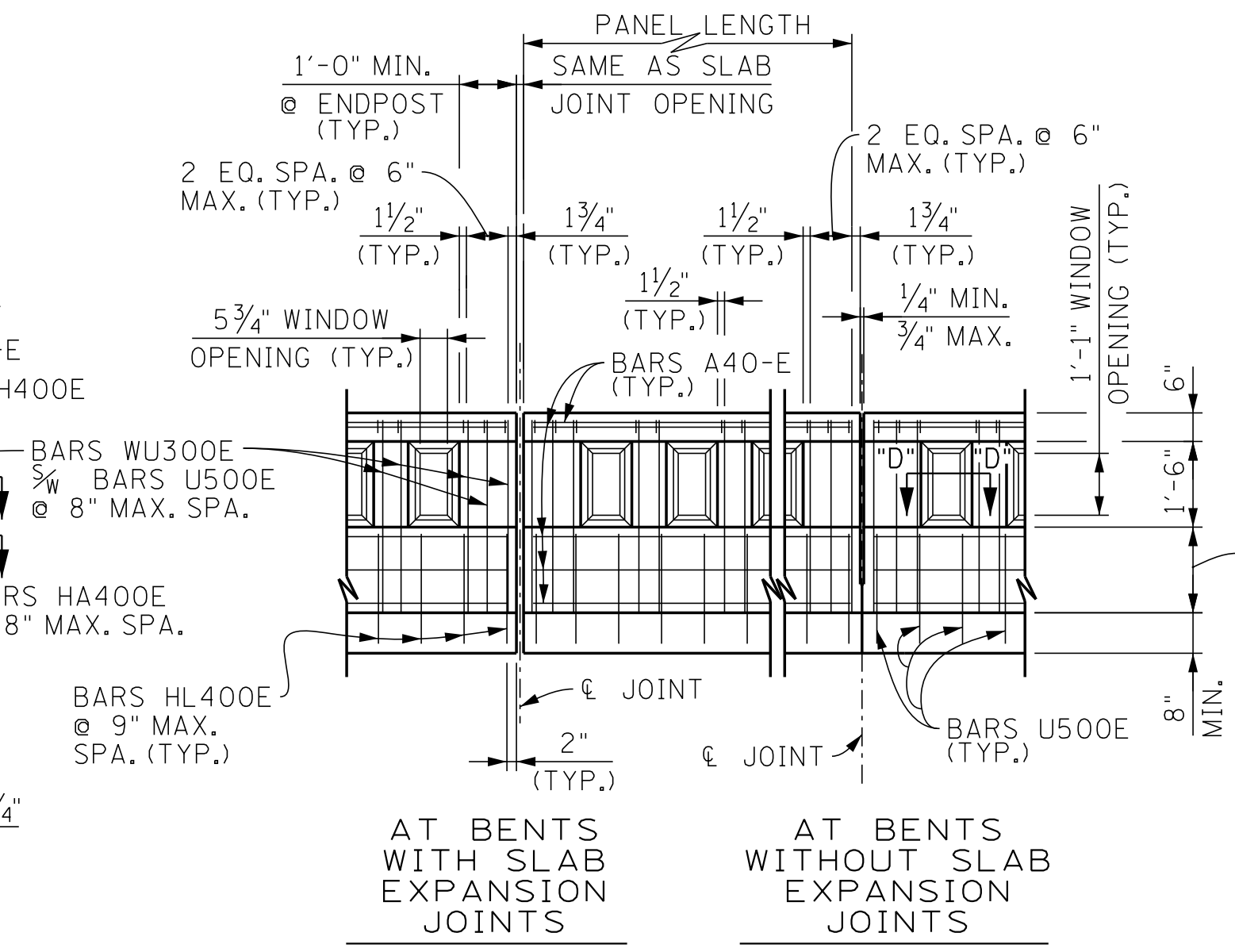


INSERT ASSEMBLY
CAST IN PLACE THREADED STEEL INSERT WITH 1/8" x 2" HEX HEAD GALVANIZED BOLTS (A307) HOT DIP ZINC COATING ASTM A153

FOR USE WHEN GUARDRAIL ATTACHMENTS ARE REQUIRED



◆ DENOTES: ADD 3" FOR STRUCTURES WITH OVERLAY.



RAIL ELEVATION
(SIDEWALK NOT SHOWN)

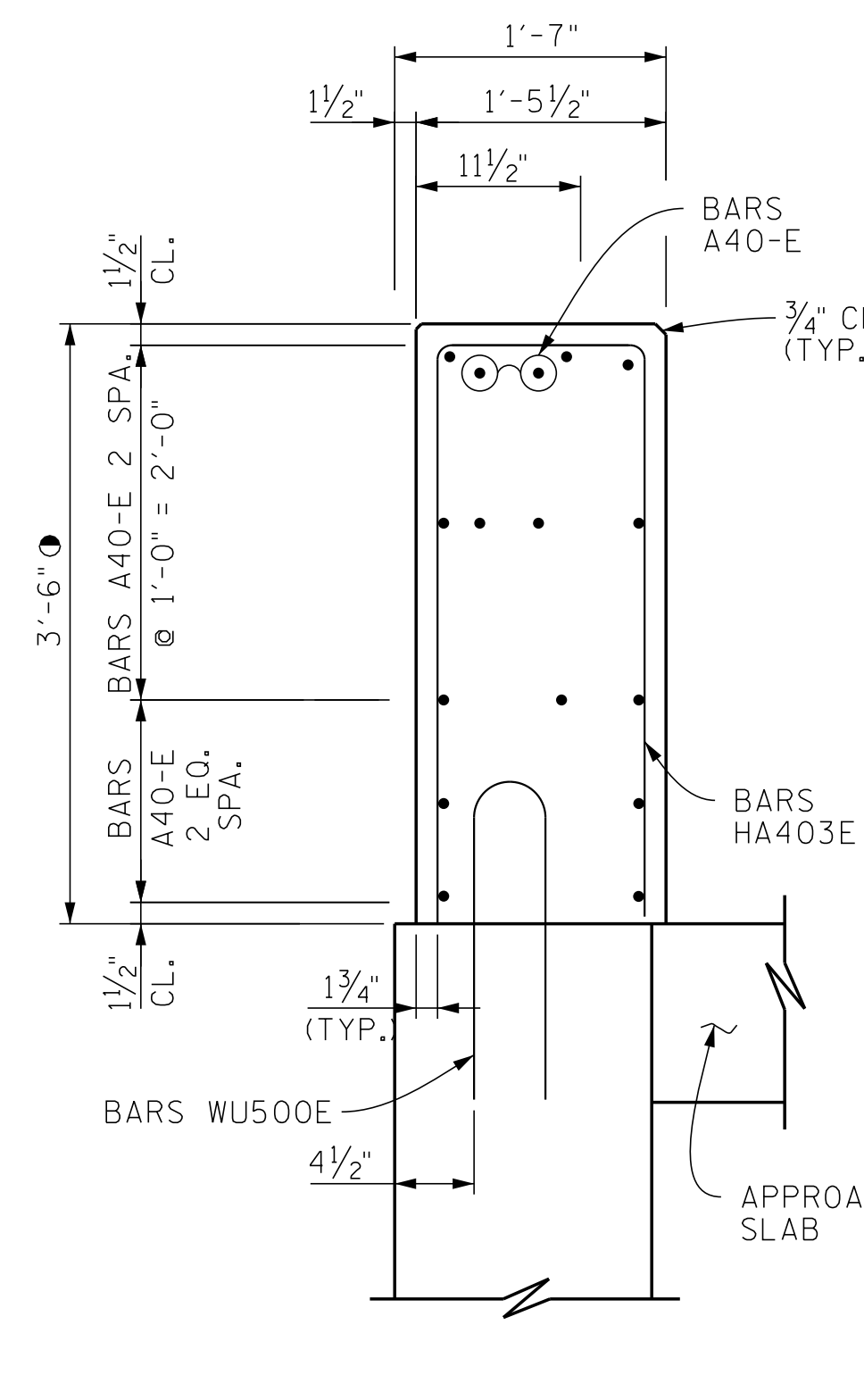
STATE OF TENNESSEE
DEPARTMENT OF TRANSPORTATION
COMBINATION RAIL

DRAFT

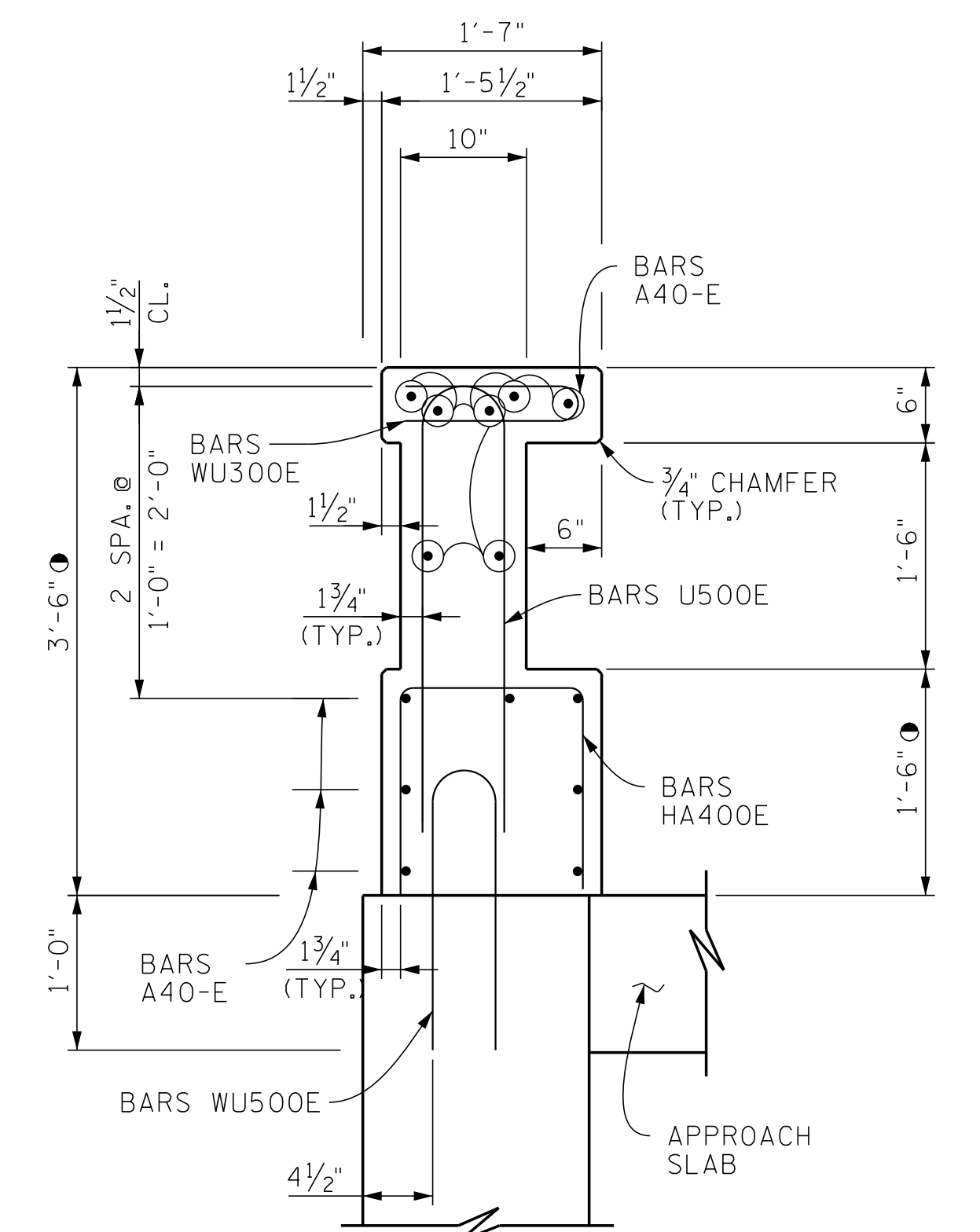
INFORMATION ONLY

CORRECT *Kevin Martinko*
ENGINEER OF STRUCTURES

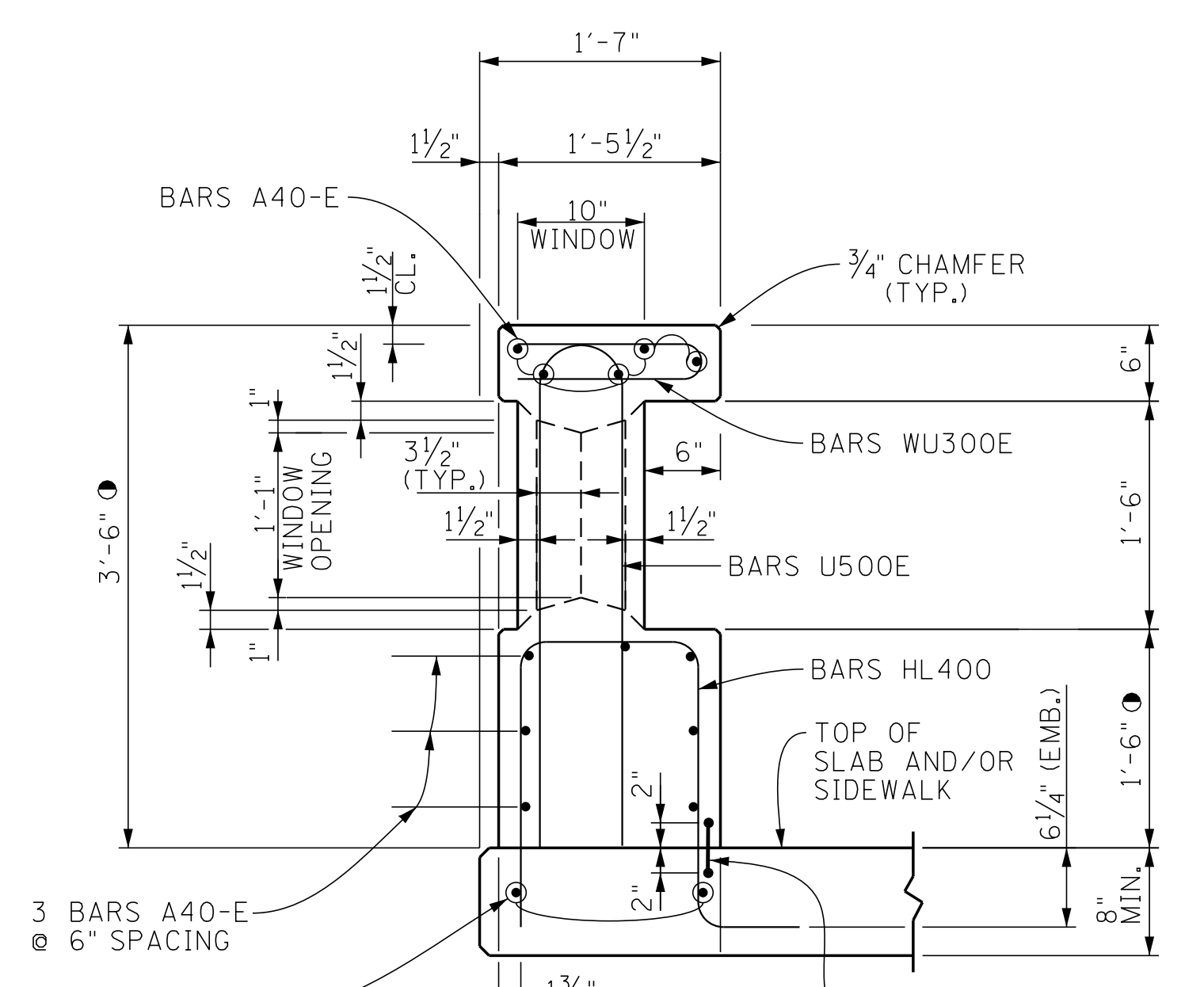
DESIGNED BY	DATE
DRAWN BY KEVIN MARTINKO	05-19
SUPERVISED BY	DATE
CHECKED BY	DATE



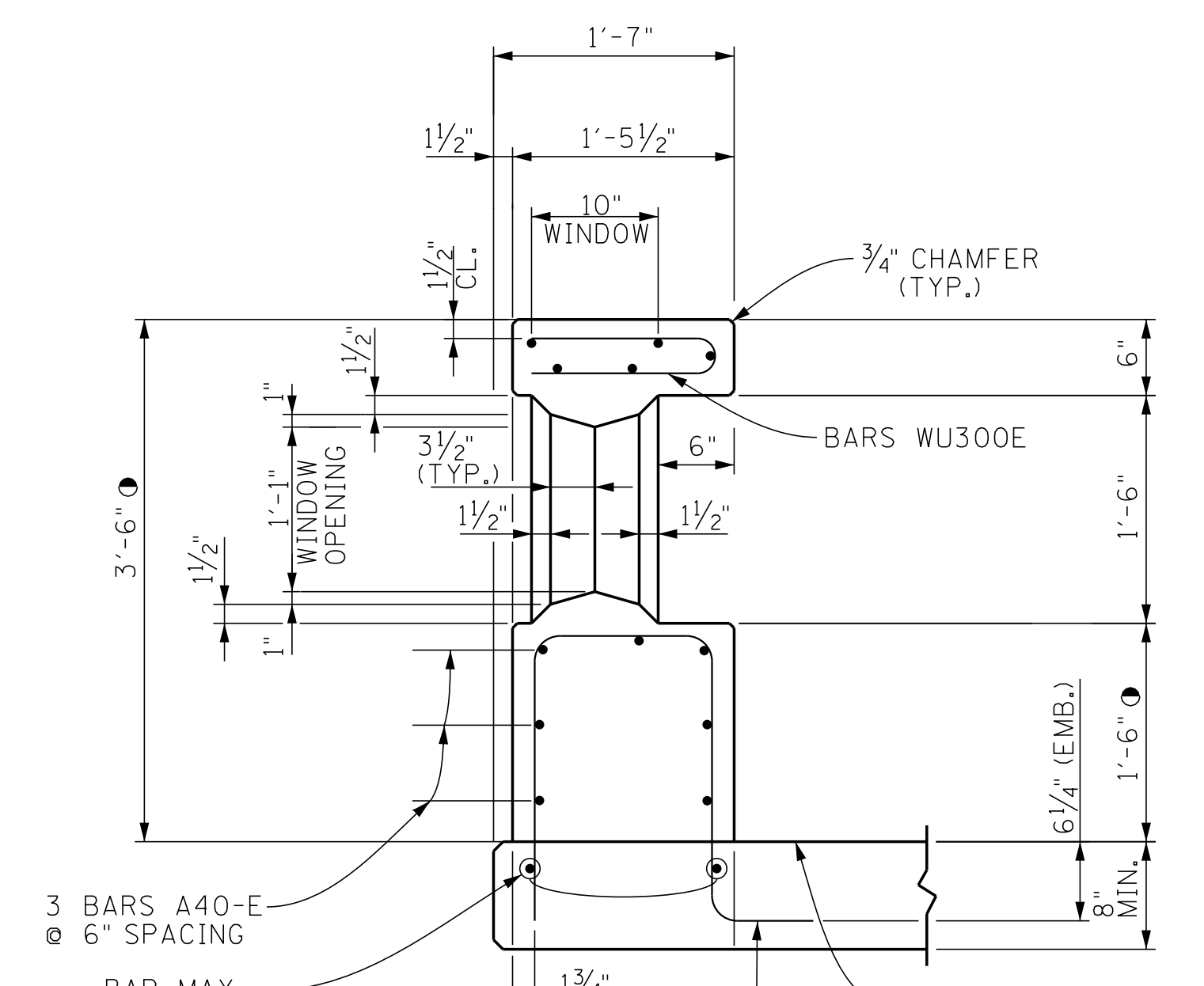
SECTION "E"-"E"



SECTION "F"-"F"

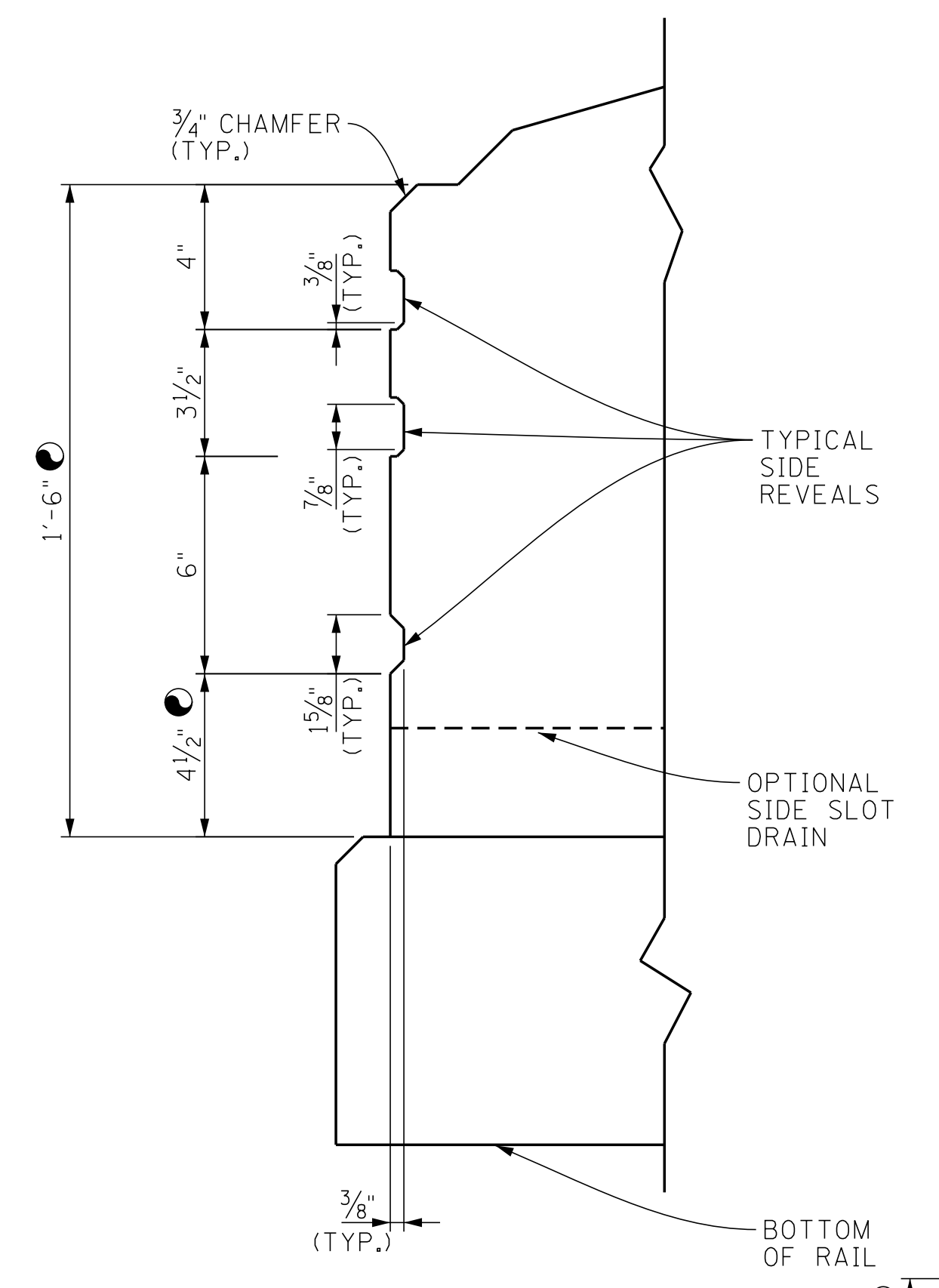


ON BRIDGE SLAB AT POST

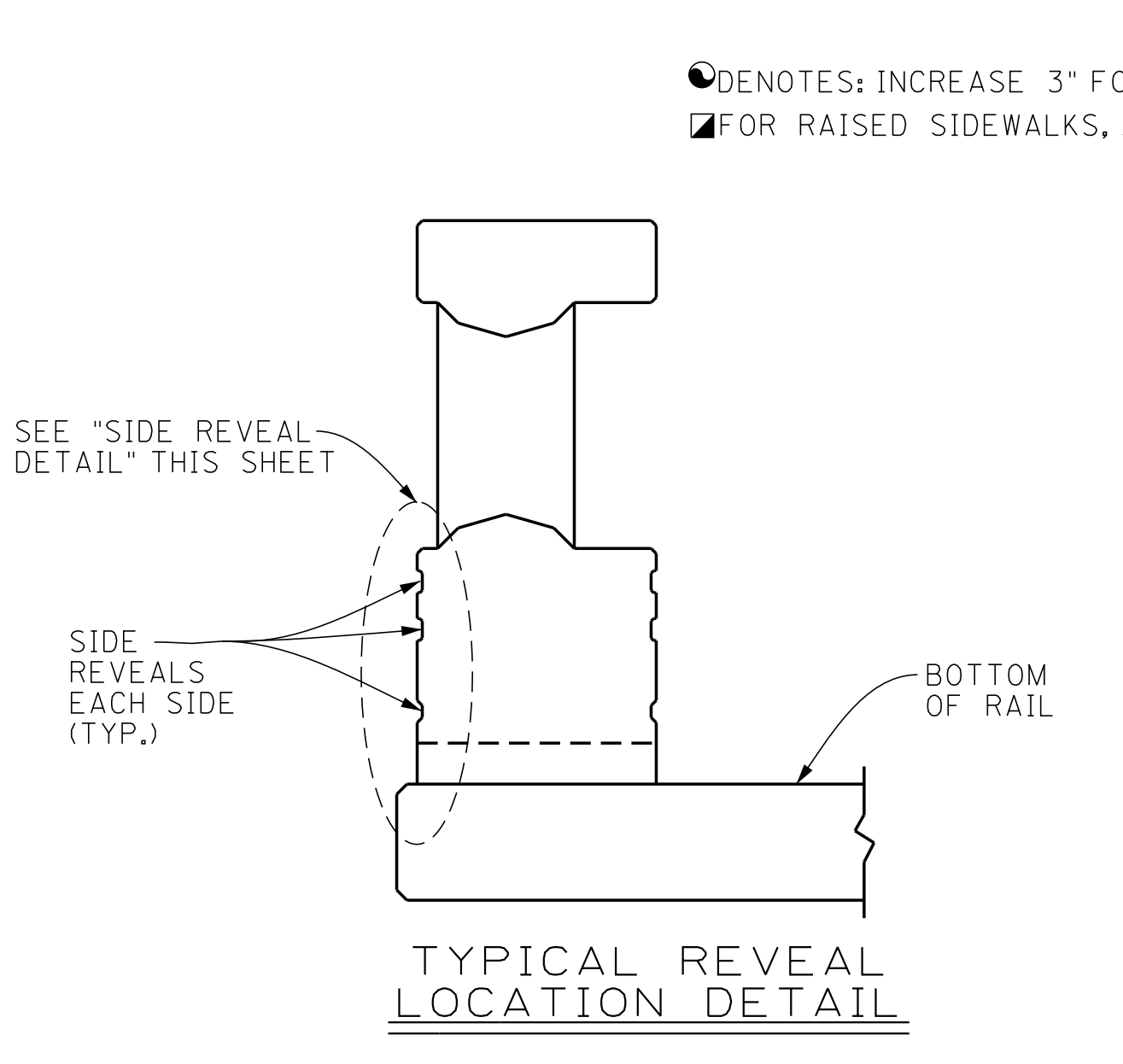


ON BRIDGE SLAB AT WINDOW

PROJECT NO.	YEAR	SHEET NO.	
	2019		
REVISIONS			
NO.	DATE	BY	BRIEF DESCRIPTION

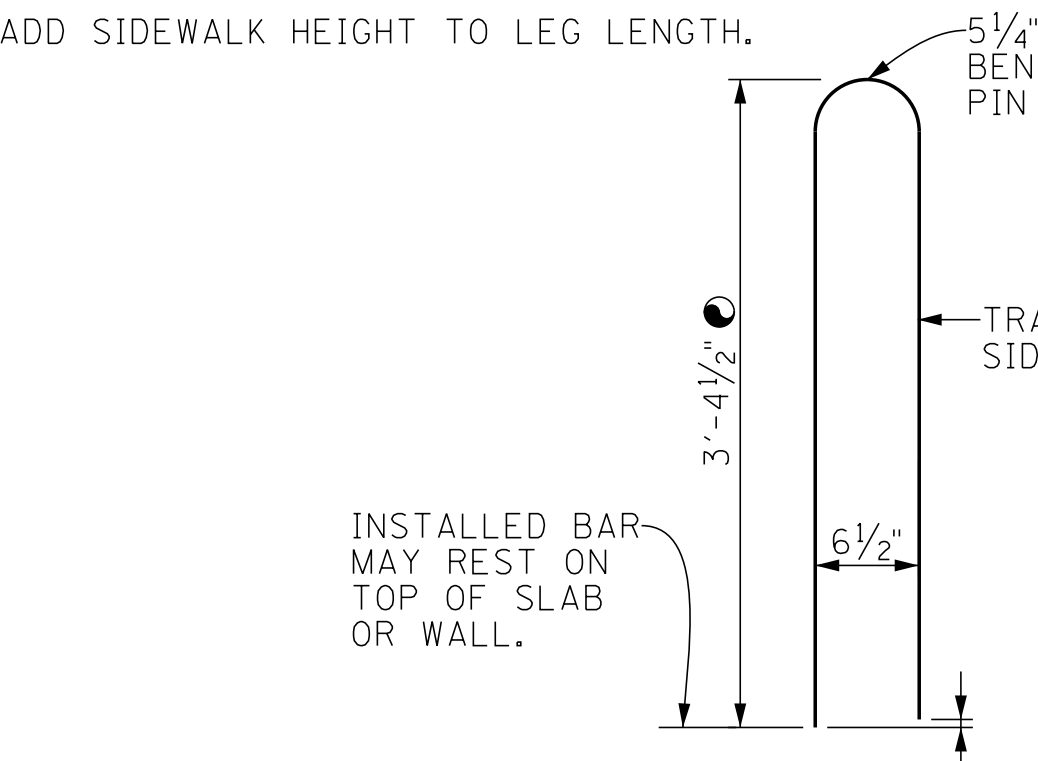


SIDE REVEAL DETAIL

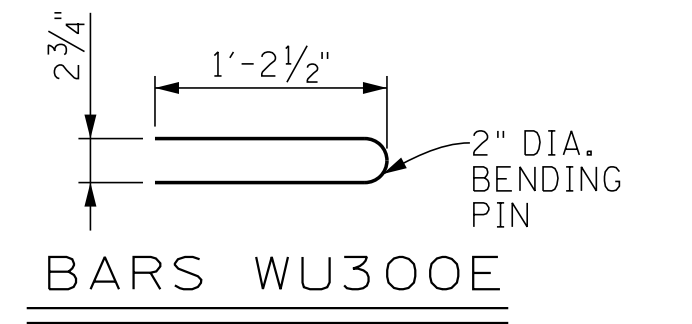


TYPICAL REVEAL LOCATION DETAIL

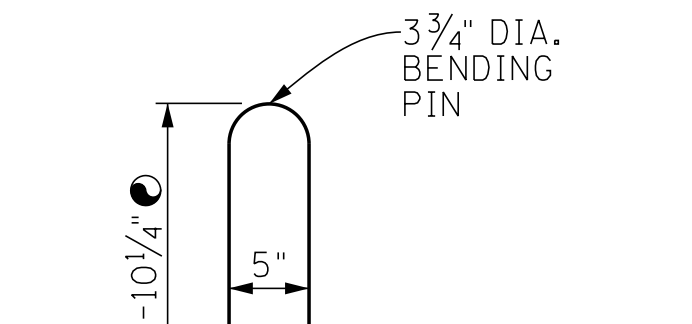
NOTES: INCREASE 3" FOR STRUCTURES WITH OVERLAY.
 FOR RAISED SIDEWALKS, ADD SIDEWALK HEIGHT TO LEG LENGTH.



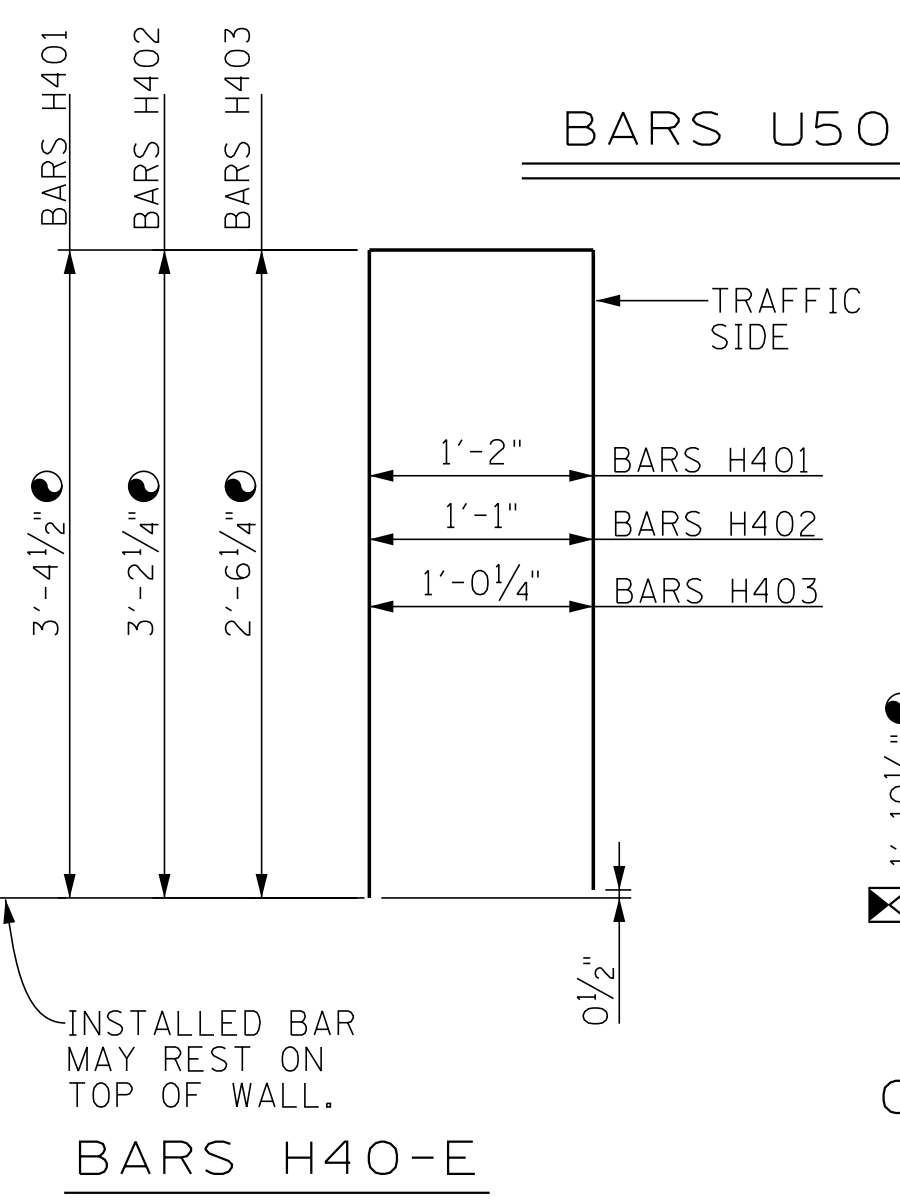
BARS U500E



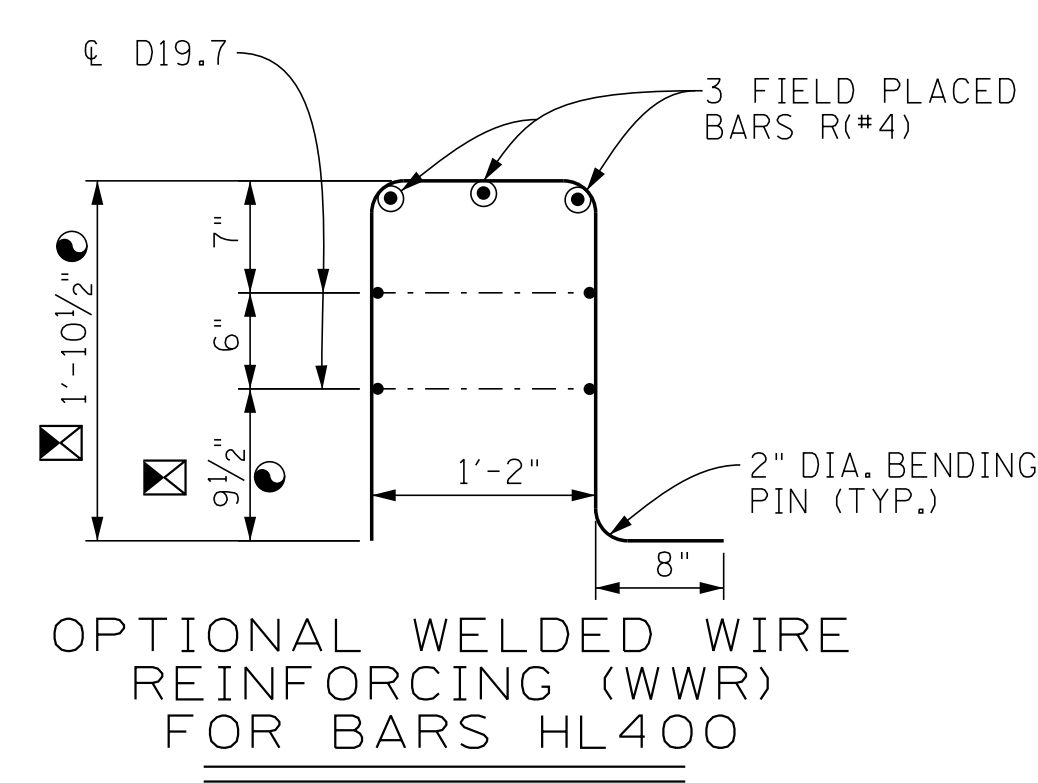
BARS WU300E



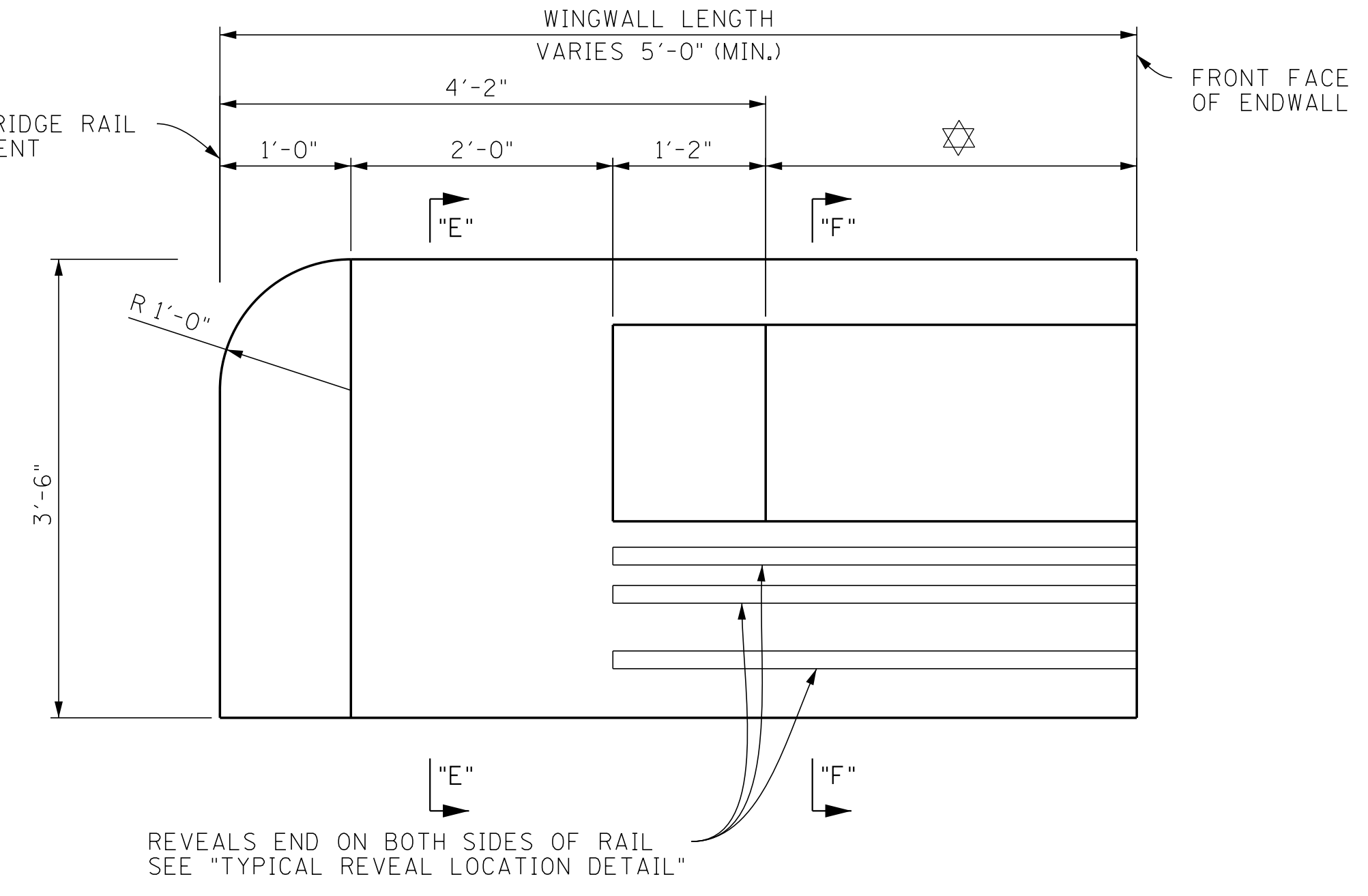
BARS WU500E



BARS H40-E

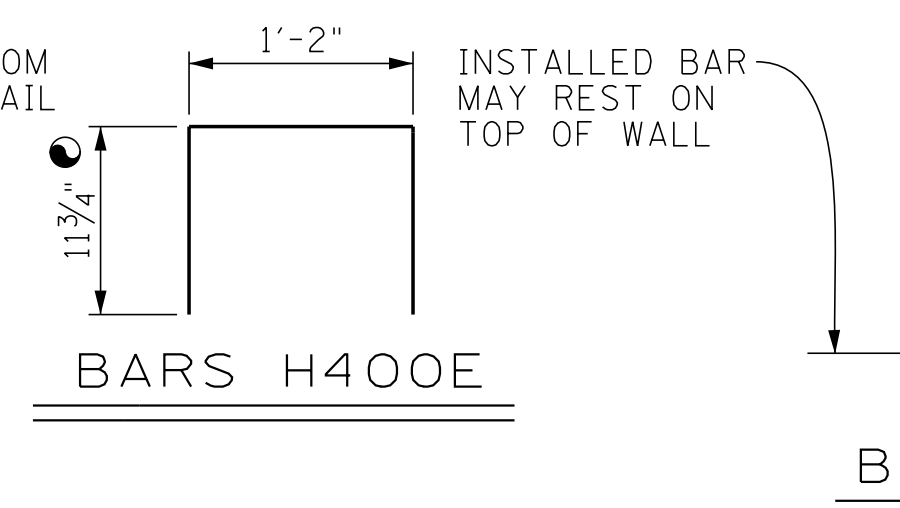


OPTIONAL WELDED WIRE REINFORCING (WWR) FOR BARS HL400

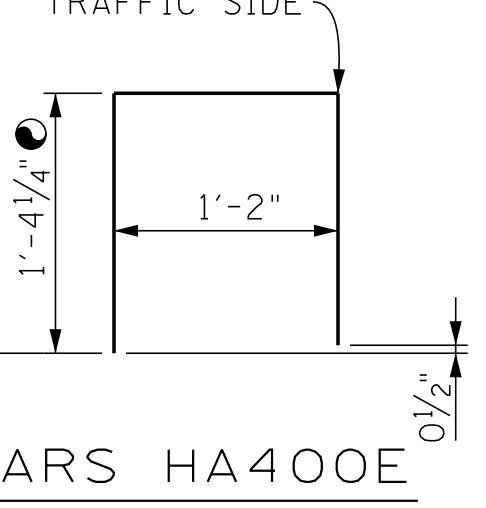


WINGWALL ELEVATION

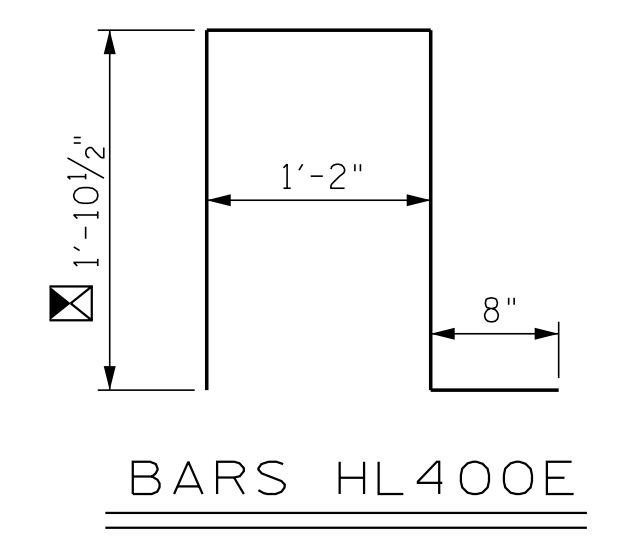
NOTES: DENOTES: WINGWALL LENGTH MINUS 4'-2" (VARIABLE) 10" MINIMUM.



BARS H400E



BARS HA400E



BARS HL400E

STATE OF TENNESSEE
 DEPARTMENT OF TRANSPORTATION
 COMBINATION RAIL DETAILS

DRAFT

INFORMATION ONLY

CORRECT
 Engineer of Structures

DESIGNED BY	DATE
DRAWN BY SHERRYL MCADOO	DATE 05-19
SUPERVISED BY	DATE
CHECKED BY	DATE